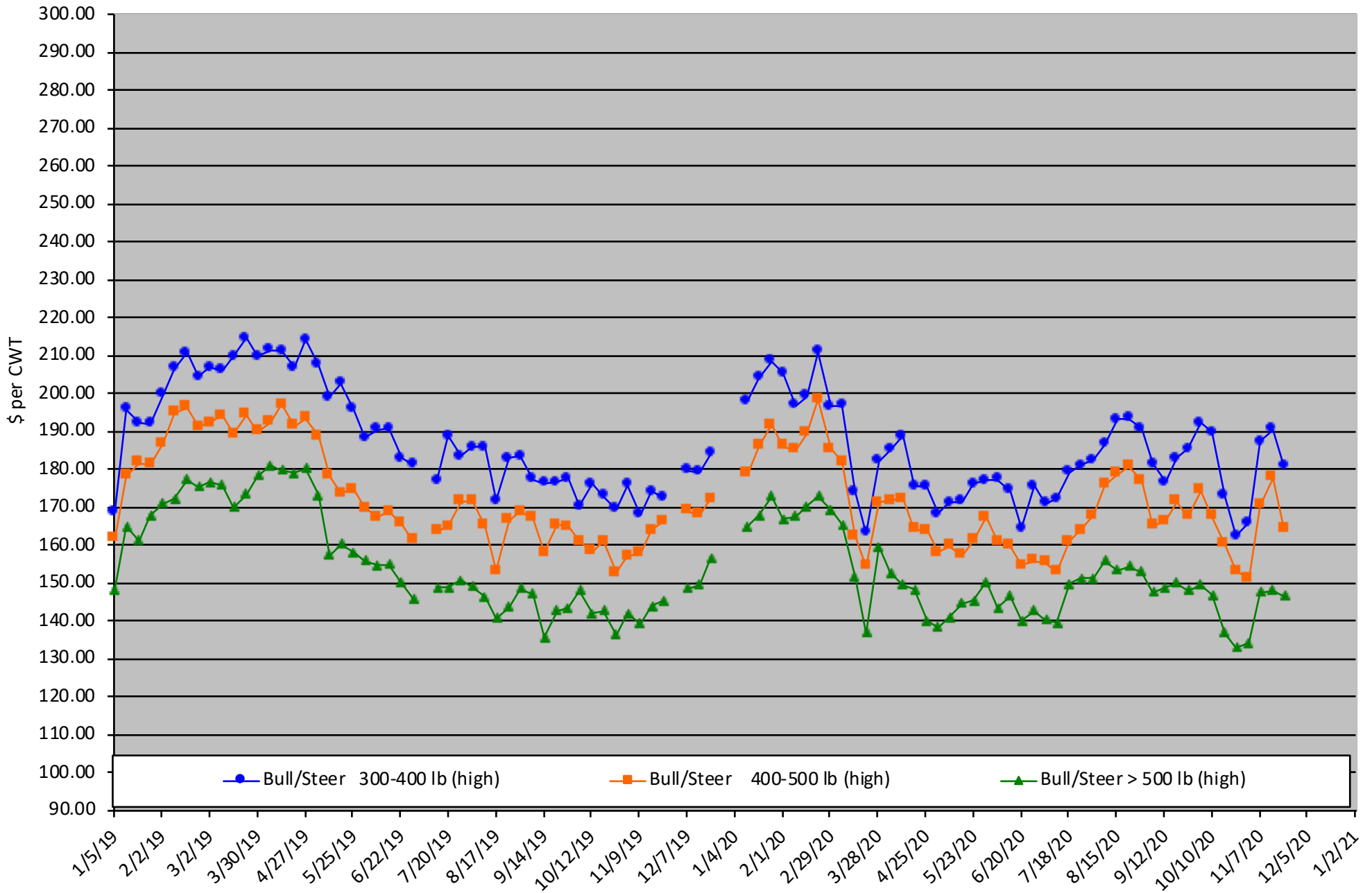


# Calf Price Trends

Trend of the Highest Price Reported for Various Weight Calves, Average of 6 East & Central Texas Livestock Auctions

For a weekly email copy of this chart please subscribe at <http://beeffax.tamu.edu> or contact a Texas A&M AgriLife County Extension Agent

Chart created by Dr. Jason Banta, Extension Beef Cattle Specialist

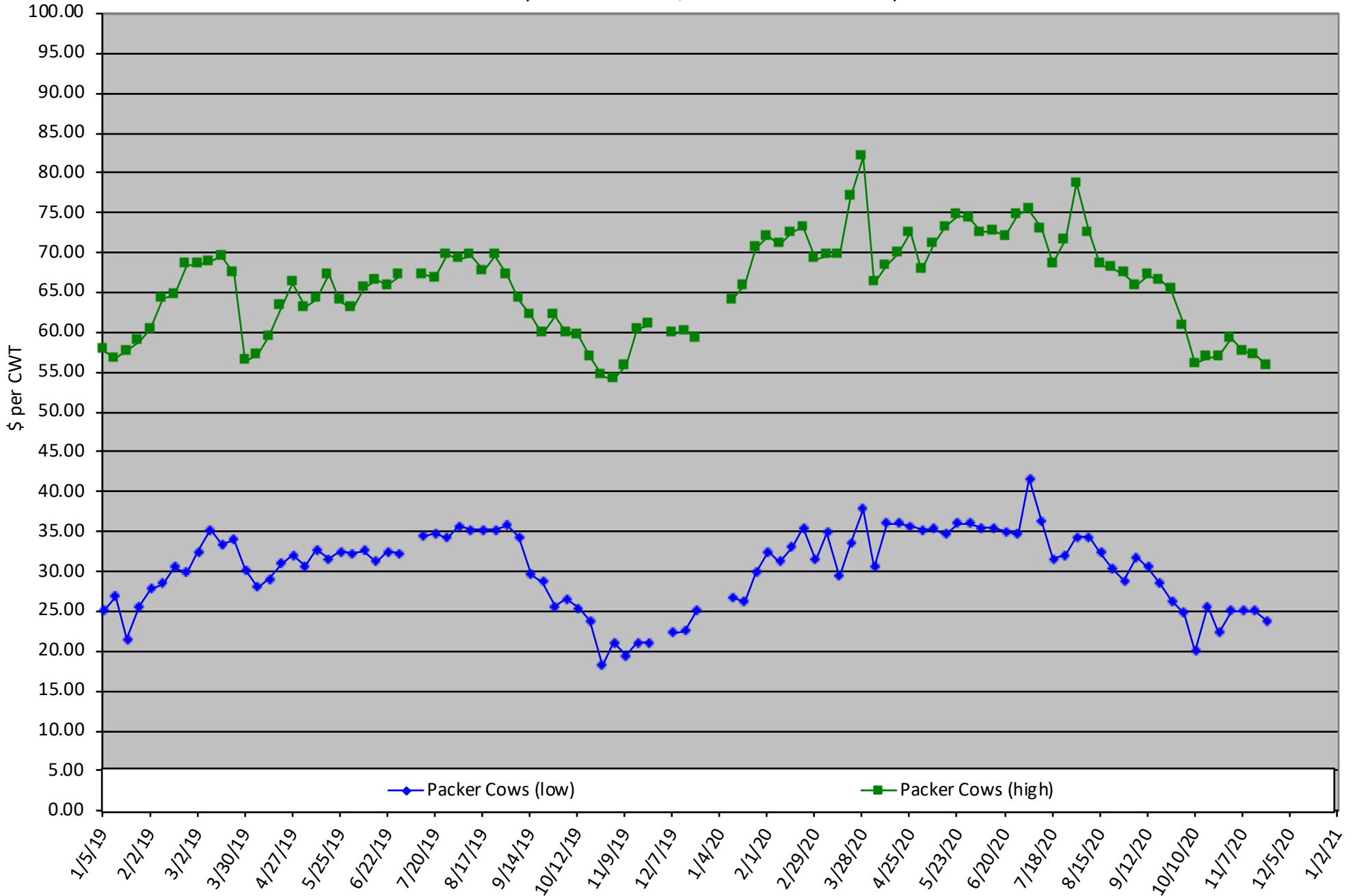


# Packer Cow PriceTrends

Trend of High and Low Prices Reported for Packer Cows, Average of 6 East & Central Texas Livestock Auctions

For a weekly email copy of this chart please subscribe at <http://beeffax.tamu.edu> or contact a Texas A&M AgriLife County Extension Agent

Chart created by Dr. Jason Banta, Extension Beef Cattle Specialist



# Pesticide Applicators Training

Thursday, December 3, 2020

## VIRTUAL PROGRAM

5 Pesticide CEUs Available  
(1 laws, 1 IPM, and 3 general)  
*To be approved*

### Morning Session (8:30 – 11:30 am)

- Weed Control Strategies for Pastures and Hay Fields
- Laws & Regulations of Pesticide Use
- Pesticide Safety

### Afternoon Session (1:00 – 3:00 pm)

- Weed Control in Turfgrass
- External Parasite Control



To attend the entire program from 8:30 – 3:00:  
Registration Cost: \$20/ person for entire program (5 CEUs)

To attend the 3 hour morning session ONLY 8:00 – 11:30:  
Registration Cost: \$15/ person for 3 hour morning session (3 CEUs)

Register online at: <https://agriliferegister.tamu.edu/Overton>  
or call Extension Conference Services @ 979-845-2604

For more information on this program please contact Pam Hickman @ 903-834-6191.

# Ag in the Evening

## Program Series

Brought to you by the Texas A&M AgriLife Extension Offices of:  
Houston County, Gregg County, Tyler County

### December 8

## Common Beef Cattle Issues/Questions

Zoom Meeting

[https://agrilife.zoom.us/meeting/register/  
tJwkd-muqjgEtAD0uL2lYnwKsqKBsvFrrcB](https://agrilife.zoom.us/meeting/register/tJwkd-muqjgEtAD0uL2lYnwKsqKBsvFrrcB)

**SPEAKER:**  
**Dr. Jason Banta**

Click the  
link to  
register

**Program**  
**Start at 6pm**

TEXAS A&M  
**AGRI**LIFE  
EXTENSION

Educational programs of the Texas A&M AgriLife Extension Service are open to all people without regard to race, color, sex, disability, religion, age, or national origin, genetic information or veteran status. The Texas A&M University System, U.S. Department of Agriculture, and the County Commissioners Courts of Texas Cooperating. Anyone needing special assistance at an Extension Program should contact the Texas AgriLife Extension Office at 936.544.7502 at least one week prior to the program or event.